

Summer Newsletter

Pembroke
estate management board

July 2025

Estate Refurbishment

The long awaited refurbishment is set to get underway later this summer, following the appointment of BuildX as the main contractor. It will be the first time there has been significant investment to improve the communal parts of the estate since the early 1990's, when residents secured funding for a major redesign and renewal, alongside the formation of the Estate Management Board.

The work will include removing the chimney stacks, new roofs, demolishing and rebuilding the bays, repairing and repainting external wall cladding, new door entry systems, stairwell redecoration and energy efficient lighting.



Although the estate will be transformed, there will be inevitable disruption while the work is in progress. We want to make sure residents have the opportunity to get away from the noise. We're keen to work with PCH and BuildX to set up a space where residents can escape for an hour or two when their block is being worked on.



We also know that many residents will have questions about how the work will be carried out. BuildX will be appointing a 'Resident Liaison Officer' and we'll be looking to work closely with him/her when appointed,



Pembroke Street Community Fun Day

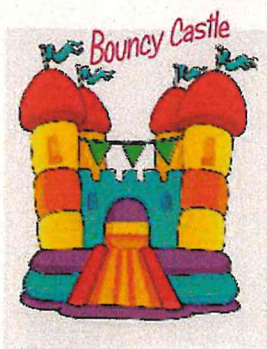
Wednesday 20th August
12 till 3pm

Dj Dolly Mixtures

Enjoy your afternoon on the Green

Outside Pembroke EMB Office

All invited



Bouncy Castle



Ice Cream



Friary Mill



Face Painting

Candy Floss



Lots of free activities and information about local services. Friary Mill bakery will be available if you want to grab something to eat or drink.

If you'd like to take part in a table top sale, please contact the estate office. It's free of charge. You just need to bring your own table.

Get in Touch

Please see below for the various ways you can contact the Pembroke Street office.



(01752) 607277



@PembrokeEMB



102 Pembroke Street, open weekdays from 8am - 4pm



office@pembrokestreet.co.uk



pembrokestreet.co.uk

CCTV

Two CCTV cameras have been installed on the estate, following continued reports of anti social behaviour outside Block 7. Reports centre on a small group of children who have been throwing stones, and damaging shrubs. In one incident, a residents window was broken. The cameras have been installed after talking to the residents affected and noting that the incidents have continued over several weeks. It is hoped the cameras will serve as a deterrent and may also provide the evidence that the Police have been asking for.

The cameras are solar powered and capture footage over a 4G mobile network. They were funded by Cllr Bill Stevens, who is also a Pembroke EMB Director. Bill is pictured with one of the newly installed cameras.



New Door Entry Systems

Ahead of the main contractor starting work on site later this year, PCH will be installing new door entry panels in each block in July and August. Two blocks have already been upgraded in recent years. The remainder will now be upgraded. You will receive new door entry fobs in due course. Please look after them as they are more expensive to replace than the older style fobs.



Fire Safety



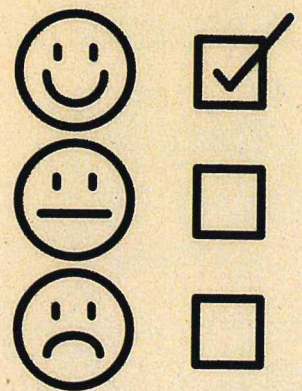
As many residents know, the EMB is responsible for ensuring the PCH fire safety policy is followed. Sometimes, residents get frustrated when they receive a note or a call from the office asking for items left outside front doors to be removed. We don't like to hassle anyone and just wanted to explain that we always try to apply the policy fairly and consistently.

It begins with a reminder note and if the item isn't removed, a phone call or a letter follows. As a last resort where there is a persistent problem, we may have to advise residents that bags of rubbish will be removed and a £10 per bag recharge will be applied by PCH.

Any items left in the entrance lobby where the owner can't be identified will be tagged for removal. We understand that sometimes a pushchair or bike might be left in the stairwell for a very short time, but where items are left for several hours or days, we need to make sure they are removed. We do appreciate your co-operation and hope you understand the reason for needing to stay on top of this issue.

Annual Satisfaction Survey

Please take a few minutes to complete and return the enclosed satisfaction survey to the estate office. The majority of the questions ask you to rank the services received and it shouldn't take more than 10 minutes to complete. Completing the survey provides important feedback and forms part of the EMB's performance monitoring.

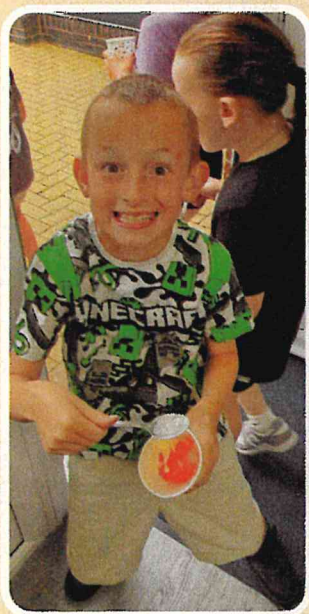


If you prefer to complete the survey online, you can access it via the pictured QR code. Many thanks in advance for completing the survey and for your continued support of the Estate Management Board.



Youth & Community Activities

The weekly Tuesday youth club sessions have provided an opportunity for children to learn about looking after their teeth and creating designs for their fathers day mug gifts. Thanks to support from Mount Wise Primary School, we've also been able to access the school each week for some outdoor exercise.



CAB sessions which take place on the first Tuesday of the month are changing to an appointment based system. The focus now is on rolling out the 'Household Support Fund' which means an increased focus on prioritising support around income maximisation, benefits and debt. CAB can still help with other issues and the EMB can make direct referrals. Please get in touch with the estate office and we'll be pleased to help.

**YOUTH
INVESTMENT
FUND**




Youth & Community Activities



Most of the activities take place at the Community Rooms, opposite the estate office.

Chair Yoga takes place weekly on a Monday morning from 10.30am until 11.30am. First session is free, then it's £3.50. Far Flung CIC run the sessions and the feedback from everyone who has taken part has been excellent.

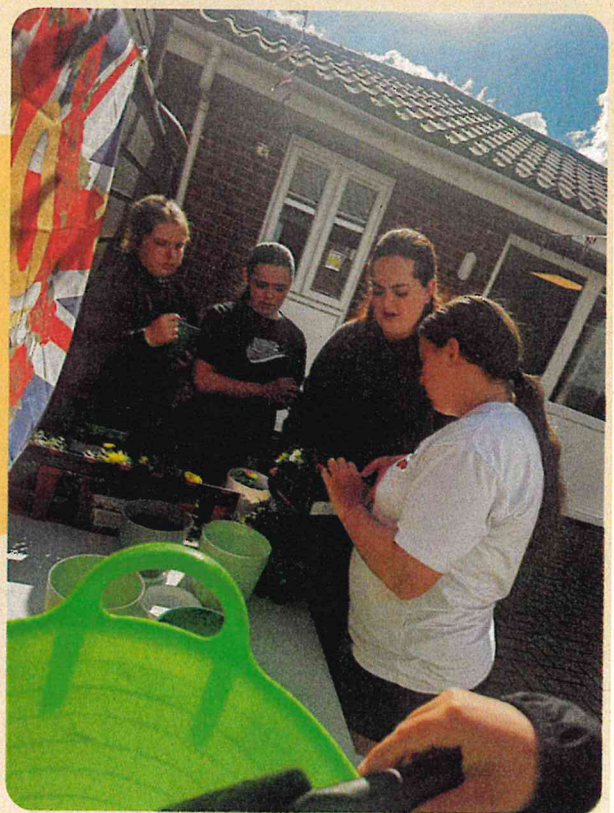
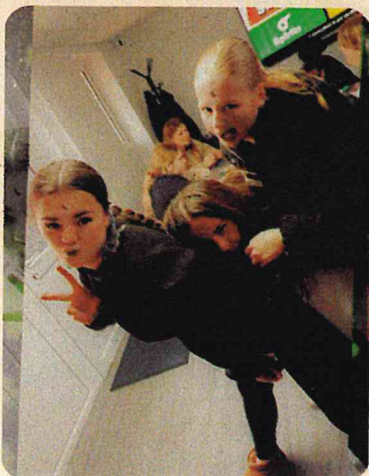
CHAIR YOGA CLASSES
*Improve flexibility, strength & circulation,
Reduce stress & anxiety*



AT PEMBROKE COMMUNITY ROOMS
102 PEMBROKE STREET, PL1 4JT
Mondays from 10.30am - 11.30am
**FIRST SESSION IS FREE, THEN
£3.50 PER SESSION**
Phone 607277 or email office@pembrokestreet.co.uk for further details

Every Monday, the over 10's youth club meets up for games, chat and craft activities. The group also get out and about. Recent off-site visits have included a trip to the 360 dome cinema at the Market Hall and a trampolining session at Supertramp.

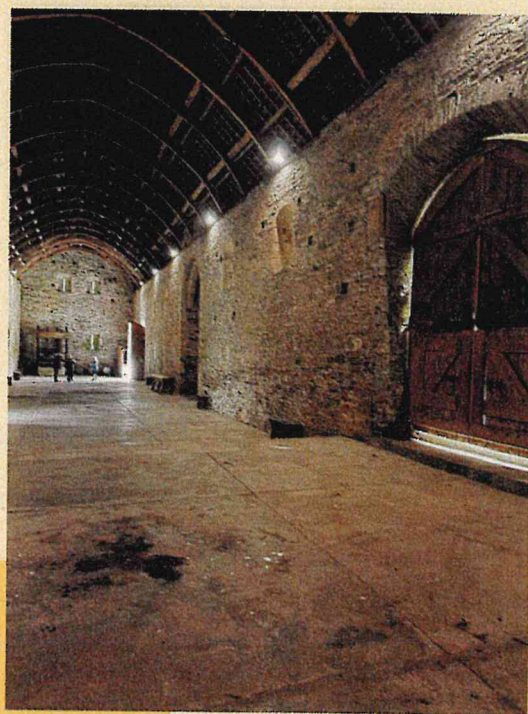


Youth & Community Activities

The Wellbeing group meets on Wednesdays. In addition to activities like bingo and crafts, the group went on a daytrip to Paignton recently.

We recently teamed up with Plymouth Community Homes to offer a free first aid course as part of the PCH 'Learn for Free' programme. Next up will be a dementia awareness session. Let us know if there any other courses you'd like to see offered.

We were also pleased to offer a daytrip to Buckland Abbey where local residents were able to enjoy the house and gardens for free.



Youth & Community Activities

During the Easter holidays, the 'Fit and Fed' programme gave young people the opportunity to try out pebble art, make fruit skewers, watch the Minecraft movie at the cinema and visit Slapton Field Studies centre for pond dipping and den building.



During August, the programme will include trips to Mount Batten water sports centre, a puppetry course in conjunction with the National Marine Park, a trip to River Dart country park, a sensory walk, swimming at Tinside Lido and a trip to Woodlands.



Leaseholders Update

The EMB have been supporting leaseholders during the statutory section 20 consultation, ahead of the major works due to start on the estate this year. Sean Lapping - who is a Pembroke Street leaseholder - asked the EMB to contact all leaseholders about contributing towards the cost of a building survey to independently assess the condition of one of the blocks of flats and compare that with the survey carried out by PCH. A number of leaseholders agreed to contribute. However, since reviewing the PCH survey report, Sean has decided not to proceed with the survey and has asked us to get the word out to leaseholders to let them know. If anyone would like to discuss the decision with Sean, please contact the EMB office and we'll pass on your message. If you already have Sean's number, please contact him direct.

Clowance Street Housing

After a number of previous updates, we're able to confirm that construction of the new housing on Clowance Street is due to begin soon. A contractor has been appointed to build the one bedroom homes, which will be managed by the EMB when they are completed. Several Pembroke Street residents have enquired about downsizing to the new properties. If you'd like to be considered for one of the homes, you'll need to be registered with Devon Home Choice. www.devonhomechoice.com



Spring Planting Event

It was great to welcome everyone to the community rooms in May for the annual Spring planting event where residents could drop in to make a free hanging basket. We were also joined by children from Mount Wise Primary School who were able to create and take home their own potted plant and helped create a planter commemorating the 80th anniversary of VE day.



Ward Councillor Funding

Thanks to your local ward councillor team of Mark Coker, Bill Stevens and Anne Freeman, a number of EMB supported projects have received a funding boost.

The councillors have been able to contribute funding towards the annual fun day, the youth club and the Wellbeing group, whilst Bill Stevens also contributed funds towards new CCTV cameras (see separate story).

Many EMB projects and services rely on small grants to make them viable to run and affordable for everyone to participate in.



Pictured above are the Councillors presenting a cheque to the Wednesday Wellbeing group.

If you'd like to find out more about the Wellbeing group or any other activities that run from the community rooms, please get in touch using the details on page 3.

WhatsApp Group

We'd like to know how many residents would be interested in using WhatsApp to keep in touch with what's happening on the estate. For anyone unfamiliar with WhatsApp, it's a free, easy to use messaging app for sending text, photos and videos.



Please contact the office if you'd be happy for your number to be added to the group. If enough residents sign up, we will trial it over the summer. And if it's successful, the option of expanding it to include messaging to log repairs and other issues could also be added.

11+ Study Support Sessions

Are you and your child looking to prepare for the 11+ grammar school exam next year? You may be interested in joining weekly study support sessions being offered by local resident, Jane Horton. The sessions are aimed at children going into year 5 in September. Jane supported her daughter through the 11+ process and she believes all families should have access to study support if they are interested in a grammar school education, regardless of ability to pay for private tuition.

The sessions run on a weekly basis from the Pembroke community rooms. They are free of charge, although Jane will be collecting £2 per week towards the cost of the entrance exam fee and includes the mock exam which usually take place in April.

Jane can provide some practice questions in advance for you to try out at home as a basis for deciding whether the 11+ is something your child and you would like to commit to. If you're interested please contact the EMB estate office and we'll pass on your details to Jane.